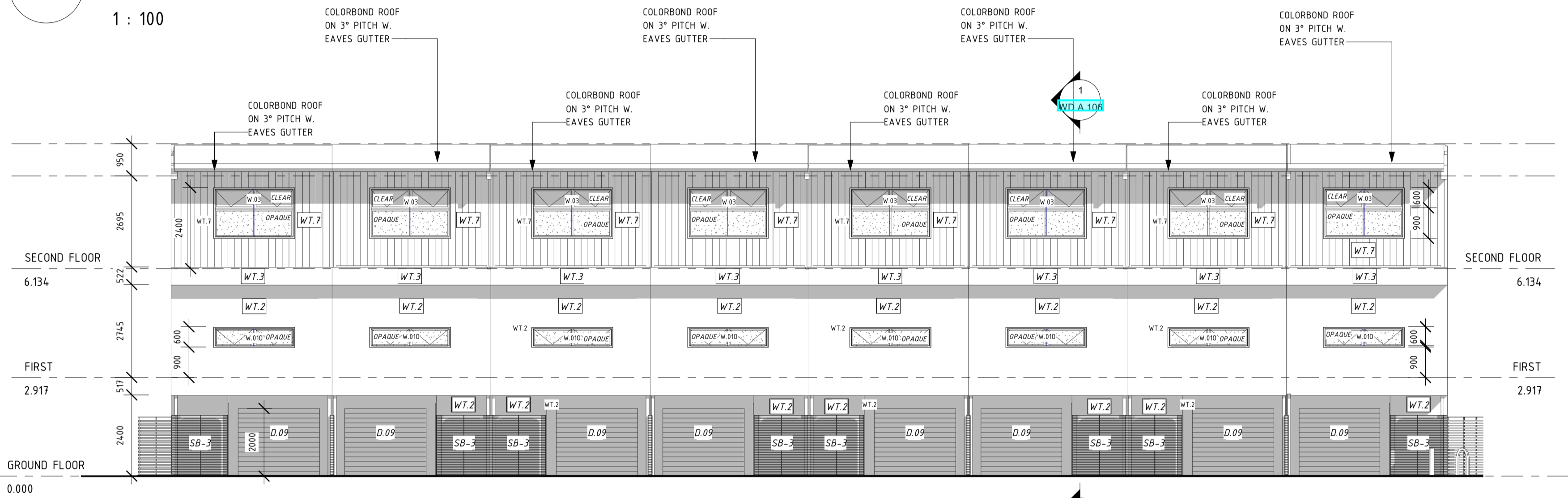
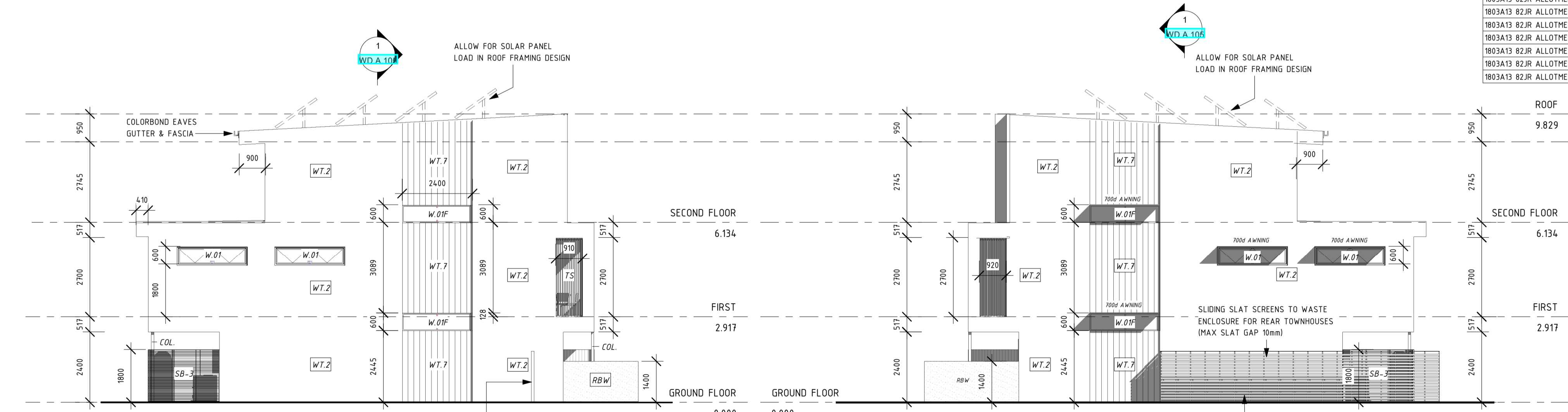


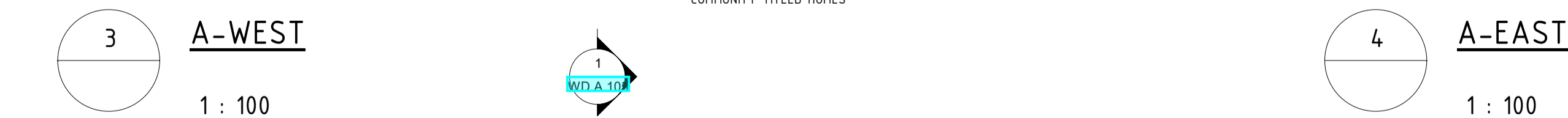
1  
A-SOUTH  
1 : 100



2  
A-NORTH  
1 : 100



3  
A-WEST  
1 : 100



4  
A-EAST  
1 : 100

WINDOW SCHEDULE - 3 STOREY HOMES						
TOWNHOUSE	TAG	HEIGHT	WIDTH	QUANTITY	WINDOW TYPE	CONSTRUCTION NOTES
1803A13 82JR ALLOTMENT 204	W.01	600	2400	2	AWNING WINDOW, CLEAR GLASS	ALUMINIUM FRAMED, DOUBLE GLAZED, ARGON FILLED GLAZING TO ENERGY EFFICIENCY REPORT DETAILS
1803A13 82JR ALLOTMENT 204	W.01F	600	2400	2	FIXED WINDOW, CLEAR GLASS	ALUMINIUM FRAMED, DOUBLE GLAZED, ARGON FILLED GLAZING TO ENERGY EFFICIENCY REPORT DETAILS
1803A13 82JR ALLOTMENT 204	W.010	550	2400	1	AWNING WINDOW, OPAQUE GLASS	ALUMINIUM FRAMED, DOUBLE GLAZED, ARGON FILLED GLAZING TO ENERGY EFFICIENCY REPORT DETAILS
1803A13 82JR ALLOTMENT 204	W.02	1500	600	1	AWNING WINDOW, CLEAR GLASS	ALUMINIUM FRAMED, DOUBLE GLAZED, ARGON FILLED GLAZING TO ENERGY EFFICIENCY REPORT DETAILS
1803A13 82JR ALLOTMENT 204	W.03	1500	2400	1	AWNING WINDOW, CLEAR GLASS TO UPPER PANES; FIXED, OPAQUE GLASS TO LOWER PANES	FRAMED, DOUBLE GLAZED, ARGON FILLED GLAZING TO ENERGY EFFICIENCY REPORT DETAILS
1803A13 82JR ALLOTMENT 204	W.04	2100	2500	1	AWNING WINDOW, CLEAR GLASS TO UPPER PANES; FIXED, CLEAR GLASS TO LOWER PANES	ALUMINIUM FRAMED, DOUBLE GLAZED, ARGON FILLED GLAZING TO ENERGY EFFICIENCY REPORT DETAILS
8						

1803A13 82JR ALLOTMENT 205, 207, 209	W.010	550	2400	3	AWNING WINDOW, OPAQUE GLASS	SINGLE GLAZING (MINIMUM) TO THIS WINDOW
1803A13 82JR ALLOTMENT 205, 207, 209	W.02	1500	600	3	AWNING WINDOW, CLEAR GLASS	SINGLE GLAZING (MINIMUM) TO THIS WINDOW
1803A13 82JR ALLOTMENT 205, 207, 209	W.03	1500	2400	3	AWNING WINDOW, CLEAR GLASS TO UPPER PANES; FIXED, OPAQUE GLASS TO LOWER PANES	SINGLE GLAZING (MINIMUM) TO THIS WINDOW
1803A13 82JR ALLOTMENT 205, 207, 209	W.04	2100	2500	3	AWNING WINDOW, CLEAR GLASS TO UPPER PANES; FIXED, CLEAR GLASS TO LOWER PANES	ALUMINIUM FRAMED, DOUBLE GLAZED, ARGON FILLED GLAZING TO ENERGY EFFICIENCY REPORT DETAILS
12						

1803A13 82JR ALLOTMENT 206, 208, 210	W.010	550	2400	3	AWNING WINDOW, OPAQUE GLASS	SINGLE GLAZING (MINIMUM) TO THIS WINDOW
1803A13 82JR ALLOTMENT 206, 208, 210	W.02	1500	600	3	AWNING WINDOW, CLEAR GLASS	SINGLE GLAZING (MINIMUM) TO THIS WINDOW
1803A13 82JR ALLOTMENT 206, 208, 210	W.03	1500	2400	3	AWNING WINDOW, CLEAR GLASS TO UPPER PANES; FIXED, OPAQUE GLASS TO LOWER PANES	SINGLE GLAZING (MINIMUM) TO THIS WINDOW
1803A13 82JR ALLOTMENT 206, 208, 210	W.04	2100	2500	3	AWNING WINDOW, CLEAR GLASS TO UPPER PANES; FIXED, CLEAR GLASS TO LOWER PANES	ALUMINIUM FRAMED, DOUBLE GLAZED, ARGON FILLED GLAZING TO ENERGY EFFICIENCY REPORT DETAILS
12						

1803A13 82JR ALLOTMENT 211	W.01	600	2400	2	AWNING WINDOW, CLEAR GLASS	FRAMED, DOUBLE GLAZED, ARGON FILLED GLAZING TO ENERGY EFFICIENCY REPORT DETAILS
1803A13 82JR ALLOTMENT 211	W.01F	600	2400	2	FIXED WINDOW, CLEAR GLASS	FRAMED, DOUBLE GLAZED, ARGON FILLED GLAZING TO ENERGY EFFICIENCY REPORT DETAILS
1803A13 82JR ALLOTMENT 211	W.010	550	2400	1	AWNING WINDOW, OPAQUE GLASS	FRAMED, DOUBLE GLAZED, ARGON FILLED GLAZING TO ENERGY EFFICIENCY REPORT DETAILS
1803A13 82JR ALLOTMENT 211	W.02	1500	600	1	AWNING WINDOW, CLEAR GLASS	FRAMED, DOUBLE GLAZED, ARGON FILLED GLAZING TO ENERGY EFFICIENCY REPORT DETAILS
1803A13 82JR ALLOTMENT 211	W.03	1500	2400	1	AWNING WINDOW, CLEAR GLASS TO UPPER PANES; FIXED, OPAQUE GLASS TO LOWER PANES	FRAMED, DOUBLE GLAZED, ARGON FILLED GLAZING TO ENERGY EFFICIENCY REPORT DETAILS
1803A13 82JR ALLOTMENT 211	W.04	2100	2500	1	AWNING WINDOW, CLEAR GLASS TO UPPER PANES; FIXED, CLEAR GLASS TO LOWER PANES	FRAMED, DOUBLE GLAZED, ARGON FILLED GLAZING TO ENERGY EFFICIENCY REPORT DETAILS
8						
40						

DOOR SCHEDULE - 3 STOREY HOMES						
TOWNHOUSE	TAG	HEIGHT x WIDTH	QUANTITY	NOTES		
1803A13 82JR ALLOTMENT 204	D.01	2100 x 820 eXT	2	ENTRY DOOR - SOLID TIMBER - PRIMED		
1803A13 82JR ALLOTMENT 204	D.02	2100 x 720	3	INTERNAL HOLLOWCORE PRIMED DOOR		
1803A13 82JR ALLOTMENT 204	D.03	2100 x 820	4	INTERNAL HOLLOWCORE PRIMED DOOR		
1803A13 82JR ALLOTMENT 204	D.06	2100 x 720	1	INTERNAL CAVITY SLIDER - HOLLOWCORE PRIMED DOOR		
1803A13 82JR ALLOTMENT 204	D.07	2400 x 2500	1	ALUMINIUM FRAMED, DOUBLE GLAZED, ARGON FILLED GLAZING TO ENERGY EFFICIENCY REPORT DETAILS		
1803A13 82JR ALLOTMENT 204	D.08	2100 x 2500	1	ALUMINIUM FRAMED, DOUBLE GLAZED, ARGON FILLED GLAZING TO ENERGY EFFICIENCY REPORT DETAILS		
1803A13 82JR ALLOTMENT 204	D.09	2000 x 2400	1	ROLLER DOOR - AUTOMATED		
13						

1803A13 82JR ALLOTMENT 205, 207, 209	D.01	2100 x 820 eXT	6	ENTRY DOOR - SOLID TIMBER - PRIMED		
1803A13 82JR ALLOTMENT 205, 207, 209	D.02	2100 x 720	9	INTERNAL HOLLOWCORE PRIMED DOOR		
1803A13 82JR ALLOTMENT 205, 207, 209	D.03	2100 x 820	12	INTERNAL HOLLOWCORE PRIMED DOOR		
1803A13 82JR ALLOTMENT 205, 207, 209	D.06	2100 x 720	3	INTERNAL CAVITY SLIDER - HOLLOWCORE PRIMED DOOR		
1803A13 82JR ALLOTMENT 205, 207, 209	D.07	2400 x 2500	3	ALUMINIUM FRAMED, DOUBLE GLAZED, ARGON FILLED GLAZING TO ENERGY EFFICIENCY REPORT DETAILS		
1803A13 82JR ALLOTMENT 205, 207, 209	D.08	2100 x 2500	3	ALUMINIUM FRAMED, DOUBLE GLAZED, ARGON FILLED GLAZING TO ENERGY EFFICIENCY REPORT DETAILS		
1803A13 82JR ALLOTMENT 205, 207, 209	D.09	2000 x 2400	3	ROLLER DOOR - AUTOMATED		
39						

1803A13 82JR ALLOTMENT 206, 208, 210	D.01	2100 x 820 eXT	6	ENTRY DOOR - SOLID TIMBER - PRIMED		
1803A13 82JR ALLOTMENT 206, 208, 210	D.02	2100 x 720	9	INTERNAL HOLLOWCORE PRIMED DOOR		
1803A13 82JR ALLOTMENT 206, 208, 210	D.03	2100 x 820	12	INTERNAL HOLLOWCORE PRIMED DOOR		
1803A13 82JR ALLOTMENT 206, 208, 210	D.06	2100 x 720	3	INTERNAL CAVITY SLIDER - HOLLOWCORE PRIMED DOOR		
1803A13 82JR ALLOTMENT 206, 208, 210	D.07	2400 x 2500	3	ALUMINIUM FRAMED, DOUBLE GLAZED, ARGON FILLED GLAZING TO ENERGY EFFICIENCY REPORT DETAILS		
1803A13 82JR ALLOTMENT 206, 208, 210	D.08	2100 x 2500	3	ALUMINIUM FRAMED, DOUBLE GLAZED, ARGON FILLED GLAZING TO ENERGY EFFICIENCY REPORT DETAILS		
1803A13 82JR ALLOTMENT 206, 208, 210	D.09	2000 x 2400	3	ROLLER DOOR - AUTOMATED		
39						

1803A13 82JR ALLOTMENT 211	D.01	2100 x 820 eXT	2	ENTRY DOOR - SOLID TIMBER - PRIMED		
1803A13 82JR ALLOTMENT 211	D.02	2100 x 720	3	INTERNAL HOLLOWCORE PRIMED DOOR		
1803A13 82JR ALLOTMENT 211	D.03	2100 x 820	4	INTERNAL HOLLOWCORE PRIMED DOOR		
1803A13 82JR ALLOTMENT 211	D.06	2100 x 720	1	INTERNAL CAVITY SLIDER - HOLLOWCORE PRIMED DOOR		
1803A13 82JR ALLOTMENT 211	D.07	2400 x 2500	1	FRAMED, DOUBLE GLAZED, ARGON FILLED GLAZING TO ENERGY EFFICIENCY REPORT DETAILS		
1803A13 82JR ALLOTMENT 211	D.08	2100 x 2500	1	FRAMED, DOUBLE GLAZED, ARGON FILLED GLAZING TO ENERGY EFFICIENCY REPORT DETAILS		
1803A13 82JR ALLOTMENT 211	D.09	2000 x 2400	1	ROLLER DOOR - AUTOMATED		
13						
104						

A.LEGEND	
KEY	DESCRIPTION
RBW	RENDERED BLOCK WALL
SB-1	1000mm HIGH VERTICAL STEEL BALUSTRADE TO BALCONIES
SB-2	1400mm HIGH VERTICAL SLAT FENCING TO FRONT FENCES
SB-3	1800mm HIGH HORIZONTAL SLAT FENCE SCREENING TO REAR OF TOWNHOUSES / CAR SPACES
TS	VERTICAL TIMBER SCREENING, PAINTED BROWN/TIMBER COLOUR TO MATCH FRONT TIMBER DOOR
WT.2	RENDERED HEBEL POWERPANEL WALL ON 25mm TOP HATS WITH FOIL BACKED SISLATION FIXED TO 90mm STUDS
WT.3	RENDERED (3 COAT ACRATEX SYSTEM) CEMENT FIBRE CLADDING (HARDIETEX) FIXED TO FRAMING
WT.4	BORAL PARTI-WALL SYSTEM (PW1601A), 25mm SHAFTLINER WITH 20mm CAVITY BOTH SIDES, THEN 92mm STEEL STUDS TO FRAMING LAYOUT DETAILS, FLUSHED AND PAINTED 10mm SOUNDSTOP PLASTERBOARD INTERNALLY.
WT.7	SCYON STRIA VERTICAL CLADDING, PAINTED TO SELECTION

REVISIONS	
ISSUE #	DATE
PD4	05/02/2020
PD5	17/03/2020
D	27/05/2020
E	14/06/2020
F	23/06/2020

AUTHOR  
GB

REVISION DESCRIPTION  
FOR TENDER

CLIENT  
82 JOHNS ROAD PTY LTD

CITIFY

PROJECT ADDRESS  
82 - 90 JOHNS ROAD, PROSPECT SA 5082

FOR CONSTRUCTION

SHEET TITLE  
ELEVATIONS

REVISION  
F

ISSUE DATE  
23/06/2020

SHEET NUMBER  
WD.A.104